



TK International
020 7794 8700
www.t-k.co.uk

Residential Sales
Residential Lettings
Property Management

Sales Office:
9 Heath Street
Hampstead
London NW3 6TP
E: sales@t-k.co.uk

Lettings Office:
16-18 Heath Street
Hampstead
London NW3 6TE
E: lettings@t-k.co.uk

tk.international
TK International
TK International

Est.
1998



Kidderpore Avenue London NW3

This superb two-bedroom apartment is set on the second floor of one of Hampstead's most prestigious developments, renowned for its outstanding facilities and refined, contemporary living. Finished to an exceptional standard throughout, the property offers a rare blend of elegance and exclusivity.

The property comprises two spacious double bedrooms, each featuring built-in wardrobes and sleek en suite bathrooms. The bright and airy open-plan reception and dining area flows seamlessly into a stylish kitchen fitted with high-spec appliances. Floor-to-ceiling glass doors lead out to a large private terrace, perfect for entertaining or relaxing outdoors. Offered unfurnished. EPC rating: B. The total area of the apartment, including the terrace, measures 1,372 square feet.

Residents enjoy exclusive access to five star, hotel style facilities within this prestigious modern development. Set on the second floor, the property benefits from a 14m swimming pool, sauna, jacuzzi, hammam, experience shower, and a fully equipped gym and spa suite. Additional benefits include a 24 hour concierge service and beautifully landscaped communal gardens, with a chauffeured transport service available for convenient travel to nearby destinations such as schools and stations.

Ideally located in Hampstead, the development is surrounded by the area's historic charm and village-style atmosphere, with landmarks such as Keats House, Kenwood House, and Hampstead Heath all nearby. Excellent transport links include Hampstead Underground Station (Northern Line, Zone 2) and several bus routes, providing easy access into central London.

£5,500 Per Month

SOLE AGENT









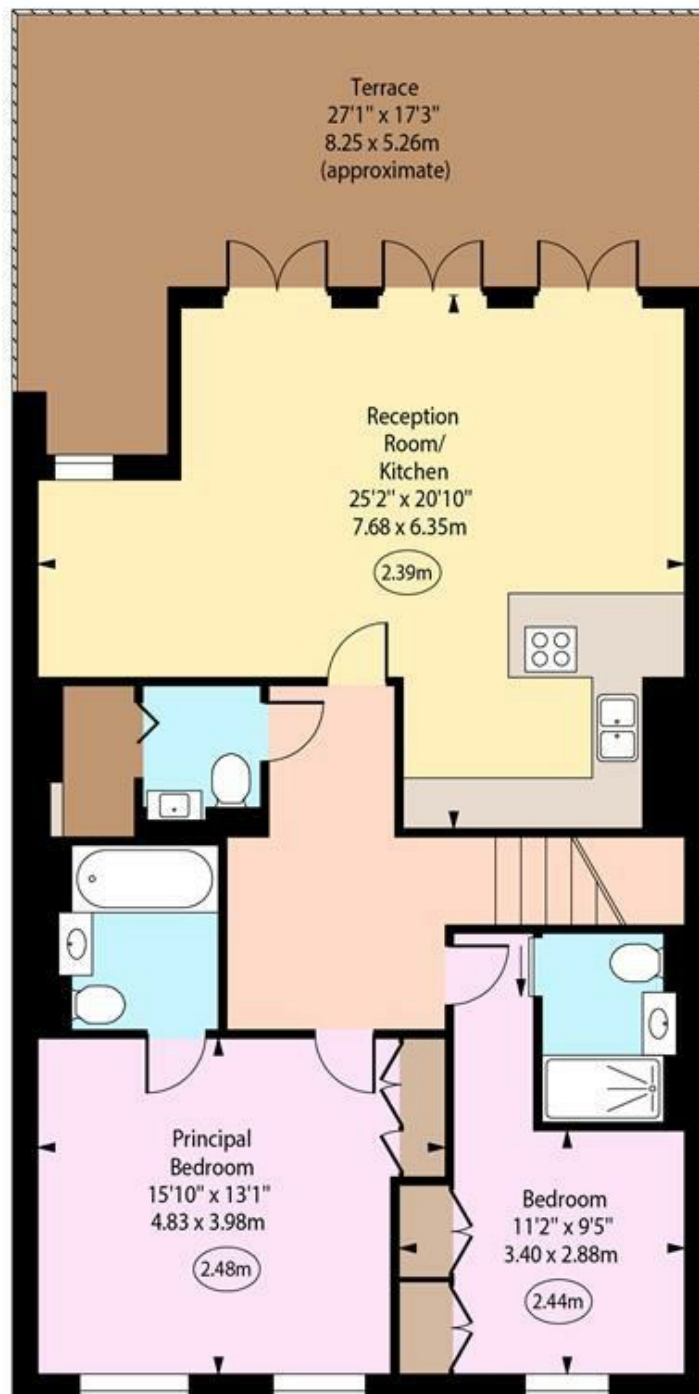
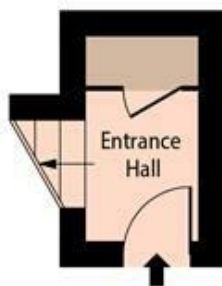




Bay House,
Kidderpore Avenue, NW3



○ - Ceiling Height



First Floor
Entrance

Second Floor

Approx Gross Internal Area	1054 Sq Ft - 97.92 Sq M
Approx Terrace Area	500 Sq Ft - 46.45 Sq M

Every attempt has been made to ensure the accuracy of the floor plan shown.
However, all measurements, fixtures, fittings, and data shown are approximate interpretations and
for illustrative purposes only.

Measured according to the RICS IPMS 2. Not To Scale.

www.goldlens.co.uk

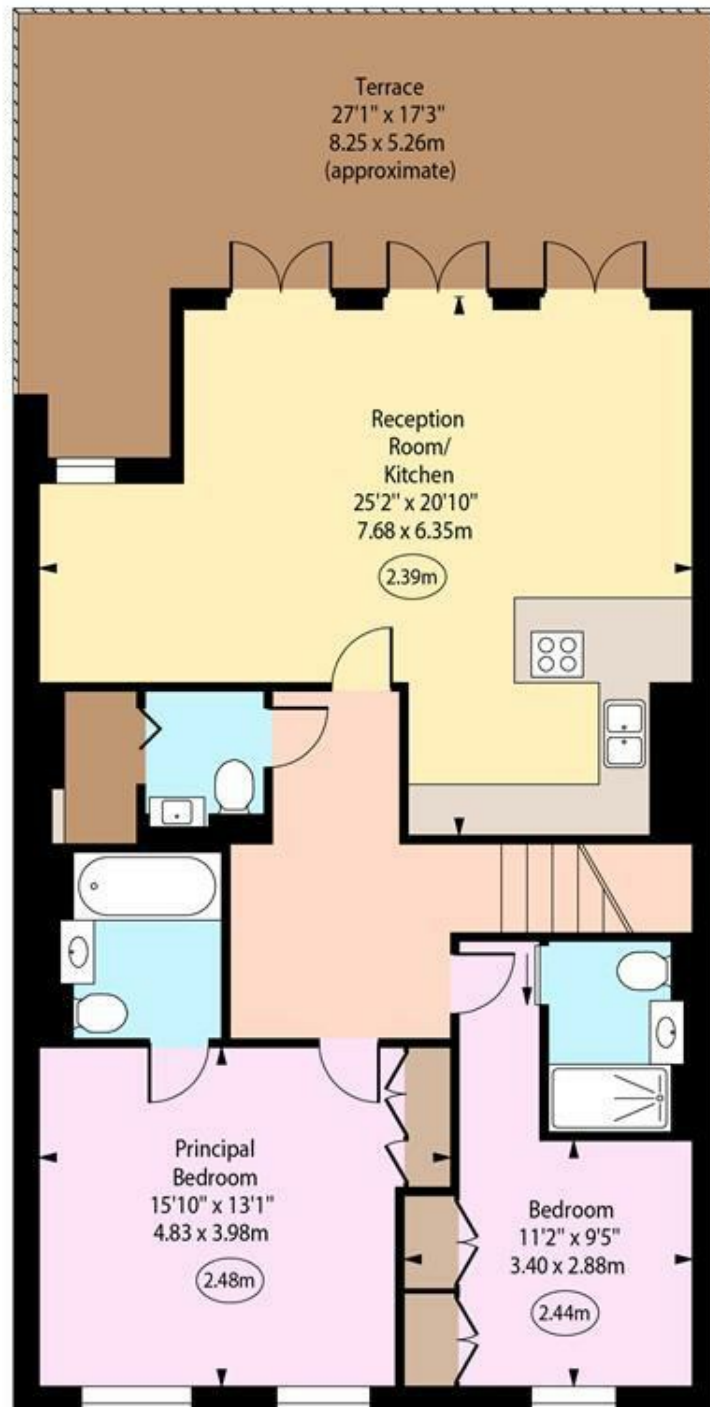
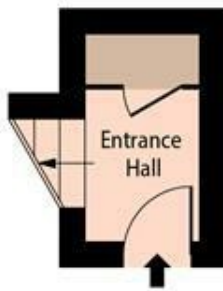
Prepared for TK International

Ref. No. 028426R

Bay House,
Kidderpore Avenue, NW3



○ - Ceiling Height



First Floor
Entrance

Second Floor

Approx Gross Internal Area 1054 Sq Ft - 97.92 Sq M

Approx Terrace Area 500 Sq Ft - 46.45 Sq M

Every attempt has been made to ensure the accuracy of the floor plan shown.
However, all measurements, fixtures, fittings, and data shown are approximate interpretations and
for illustrative purposes only.

Measured according to the RICS IPMS 2. Not To Scale.

www.goldlens.co.uk

Prepared for TK International

Ref. No. 028426R